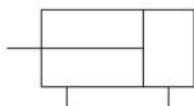


C(D)Q2, Compact Cylinder, Double Acting, Single Rod w/Auto Switch Mounting Groove CQ2B25-10D

Adatlap

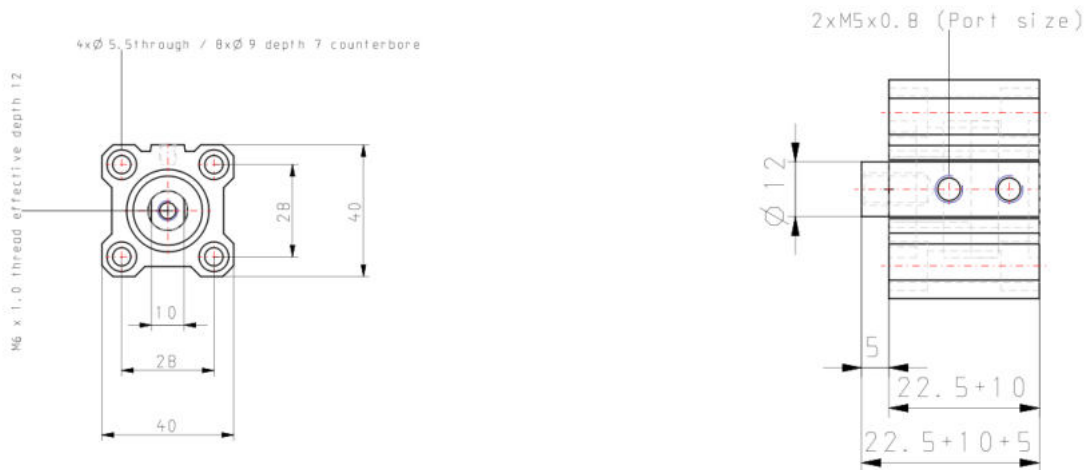
Following a review of our popular CQ2 compact cylinder Series our R&D engineers have totally redesigned the complete cylinder range to bring you even more performance benefits and increased cylinder options. The major difference between the new CQ2 range and the old model is the totally redesigned body, which offers improved auto-switch mounting possibilities plus an overall reduction of cylinder weight of between 5 -13% depending on the model. Now, all CQ2 cylinders from Ø 32 to 200mm are designed with slide in grooves which can accommodate auto-switches on all four cylinder sides without the need for auto-switch brackets. And, for smaller bore sizes between Ø 12 and 25mm, slide in grooves have also been integrated in the new body design to accommodate bracket free auto-switches on two surfaces. Designed for use with our simple to set, dual colour, solid state auto-switches, the integrated auto-switch channel ensures total protection against potential accidental damage and improved health and safety benefits during both installation and maintenance procedures.



Standard Specifications

Magnet	None
Mounting	Through Hole [Standard]
Type	Standard
Bore Size	25mm
Port Thread Type	Rc: 32-100 Bore; M Thread 12 to 25 Bore
Lube-retainer	Without Stable Lubrication Function
Stroke	10 mm
Body Option	Rod End Female Thread
Auto Switch Groove	None, also for 12-25 Bore w/o Magnet
Auto Switch	No Switch
Lead Wire or Prewired Connector	0.5m or None in the Case of No Switch
Number	2 pcs. or None in the Case of No Switch
Pressure medium	Compressed air
Maximum temperature of pressure medium	70 °C
Maximum temperature of pressure medium with magnet	60 °C
Minimum temperature of pressure medium	-10 °C [without condensation]
Minimum temperature of pressure medium with magnet	-10 °C [without condensation]
Maximal operating pressure	1.0 MPa
Minimum operating pressure	0,05 Mpa
Proof pressure	1.5 MPa
Maximum ambient temperature	70 °C
Maximum ambient temperature with magnet	60 °C
Minimum ambient temperature	-10 °C [without condensation]
Minimum ambient temperature with magnet	-10 °C [without condensation]
Conform to the European RoHS Directive	Not conform
Number of pneumatic connections	2 pcs.
Pneumatic input connection	M5
Mode of operation of drive	Double acting
Theoretical cylinder force, advance stroke (at 0.5 MPa)	189 N
Theoretical cylinder force, return stroke (at 0.5 MPa)	245 N
Maximum piston speed	500 mm/s
Geometric form of the piston rod	Single rod
Malethread of rod end	M10 x 1.25
Femalethread of rod end	M6 x 1.0
Minimum piston speed	50 mm/s
Weight	0.196 kg

Dimensions



Additional information

Catalogue

[CQ2-Z-B_EU.pdf](#)

Related Products



D-M9BWL

M9NW/M9PW/M9BW, 2 Colour Indication Style Solid State Switch, Direct Mounting, Grommet, In-line



D-M9PWL

M9NW/M9PW/M9BW, 2 Colour Indication Style Solid State Switch, Direct Mounting, Grommet, In-line



D-M9NWL

M9NW/M9PW/M9BW, 2 Colour Indication Style Solid State Switch, Direct Mounting, Grommet, In-line



AS1201F-M5-04A

AS*2/3*1F-A, Speed Controller with One-touch Fitting, Push Lock, Elbow/Universal Type



AS1301F-M5-04A

AS*2/3*1F-A, Speed Controller with One-touch Fitting, Push Lock, Elbow/Universal Type



AS1201FS-M5-04

AS*2/3*1FS, Speed Controller with Indicator, Elbow & Universal Types



AS1301FS-M5-04

AS*2/3*1FS, Speed Controller with Indicator, Elbow & Universal Types



AS1002FS-04

AS*2FS, Speed Controller with Indicator, In-line Type



KQ2H04-M5A1

KQ2H, One-touch Fitting White Color - Male Connector



TU0604B-20

TU, Polyurethane Tubing, Metric Size



SY

SY3000/5000/7000, Subplate for Single Unit New SY, IP67 Compliant