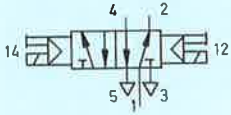
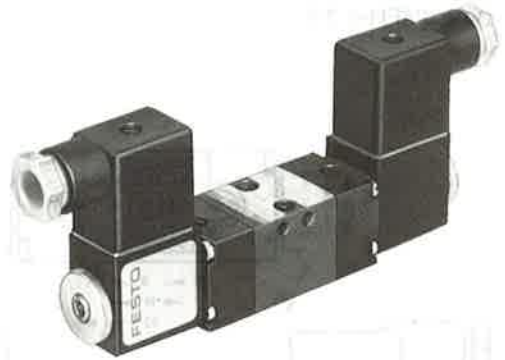


Double solenoid valve
with manual override
without sub-base
Type JMFH-5-3.3



The valve is actuated by means of alternate switching of the voltage supply to the solenoid coils, and retains its switched position, even after the signal is removed, until a counter-signal is received.

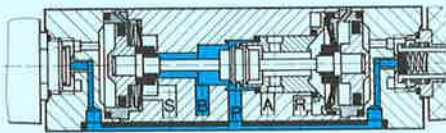


Accessories:

For sockets and accessories, see sheets 2.594 to 2.598.

10

Sub-bases, see page 2.910.

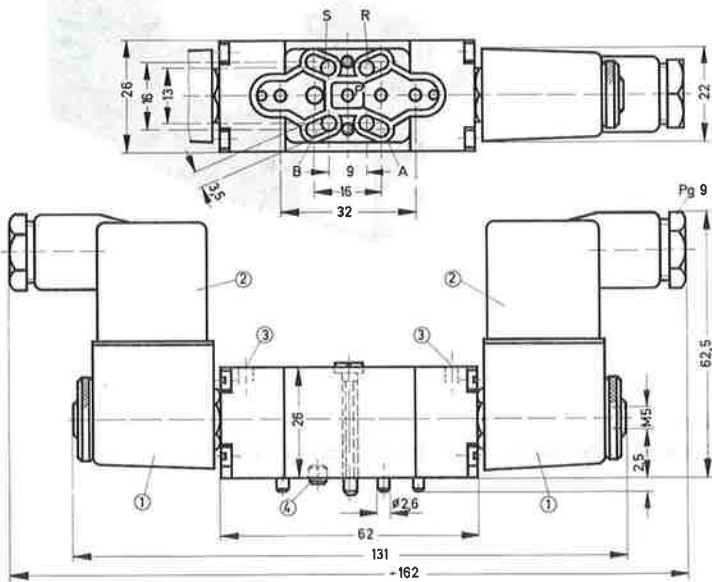


- 1 (P) = Supply port
- 4, 2 (A, B) = Working or outlet lines
- 5, 3 (R, S) = Exhausts

Order code	with socket	6069 JMFH-5-3.3	} Solenoid coils, see sheets 2.591, 2.591.1
Part No./Type	without socket	+ voltage data	
Medium		Compressed air, filtered (lubricated or unlubricated)	
Design		Poppet valve, diaphragm actuated	
Mounting		On sub-base	
Connection		As appropriate to the sub-base used	
Nominal size		3.3 mm	
Standard nominal flow rate (1 → 4)		130 l/min (basic valve)	
Pressure range		2 to 8 bar	
Switching time at 6 bar		13 ms	
Ambient temperature		0 to +40 °C	
Medium temperature		0 to +60 °C	
Materials		Housing: anodized aluminium; seals: Perbunan	
Weight		0.330 kg	
DC	Standard voltages	12, 24 V	}
	Special voltages	12 to 220 V	
AC	Standard voltages	24, 42, 110, 220 V/50 Hz or 50 and 60 Hz	
	Special voltages	12 to 240 V/50 or 60 Hz	
Power consumption	DC	4.5 W	
	AC	Hold: 6 VA, pull: 7.5 VA	
Duty cycle		100%	
Degree of protection		IP 65 (DIN 40050)	

Solenoid actuated valves
 5/2-way valves, indirectly actuated, barbed fittings for 4 mm tubing, G 1/8

Type JMFH-5-3.3



Permissible tightening torque for the securing nut of the solenoid coil = 1.5 Nm

- ① Solenoid coil can be rotated
 - ② Plug can be repositioned by 180°
 - ③ Manual override
 - ④ Detent pin
- 1 (P) = Supply port
 - 4, 2 (A, B) = Working or outlet lines
 - 5, 3 (R, S) = Exhausts