

# Compact pressure sensor SPAB

FESTO



The inexpensive, compact pressure sensor SPAB with display is distinguished by its outstanding ease of operation thanks to intuitive menu navigation. It's simple to set up with surprisingly short installation and commissioning times thanks to compact dimensions of only 30 x 30 mm and the wide choice of mounting options.

#### Diversity in action

Thanks to a great variety of configuration options:

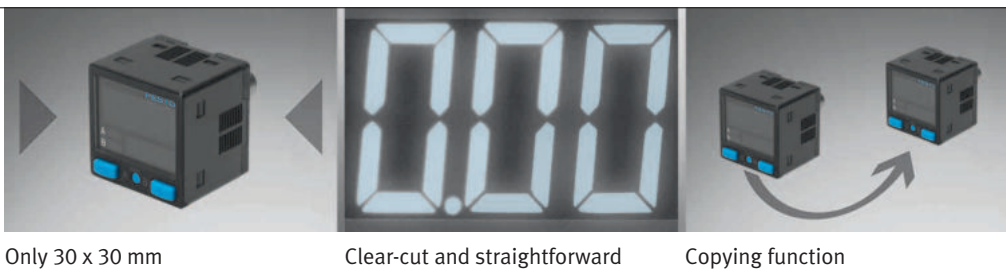
- NPN or PNP switching outputs
- Analogue voltage output
- Country-specific pressure connection in NPT, RPT and G formats
- Electrical connection: M8 or cable
- Wall or panel mounting
- Optional: adapter plate for connection when installation space is very limited.

#### Conspicuously clear-cut

With its clear-cut switching status display, the SPAB reliably indicates system status. Its two-part, three colour display assures straightforward menu navigation and read-outs.

#### Quick copying

After one device has been programmed, settings can be transferred to all other SPAB pressure sensors.



320.1.PSI →

Product Short Information

# Compact pressure sensor SPAB

## Type codes

Example **SPAB** **P10R** **G18** **2P** **K1**

Function	
SPAB	Piezoresistive pressure sensor with multi-coloured display

Pressure measuring range	
B2	-1 to 1 bar
P10	0 to 10 bar

Measured variables	
R	Relative pressure

Pneumatic connection	
G18	M5 internal and G1/8" external thread
R18	M5 internal and RPT external thread
N18	M5 internal and NPT external thread
F	Internal thread M5

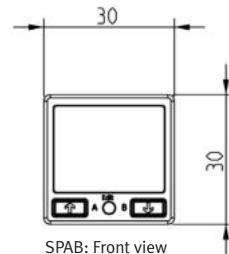
Electrical output	
2P	2 switching outputs, PNP
2N	2 switching outputs, NPN
PB	1 switching output, PNP, and 1 to 5 V analogue
NB	1 switching output, NPN, and 1 to 5 V analogue

Electrical connection	
K1	Cable, 2.5 m long (included in the scope of delivery)
M8	M8x1 plug
L1	Plug design L1

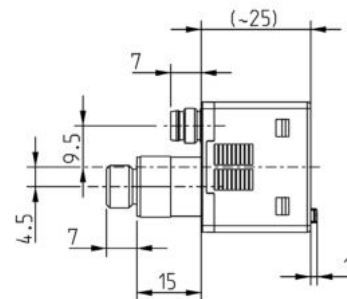
Technical data		
Pressure meas. range [bar]	-1 to +1	0 to 10
Measured quantity	Relative pressure	
Pneumatic connections	M5 internal, G1/8" external M5 internal, RPT 1/8 external M5 internal, NPT 1/8 external	
Display	3-colour LCD	
Accuracy FS	1%	2%

Electrical data	
Switching outputs	2 x PNP; 2 x NPN
Analogue output	1 to 5 V
Operating voltage range	12 to 24 V DC
Electrical connection	M8x1 plug; Cable, 2.5 m long

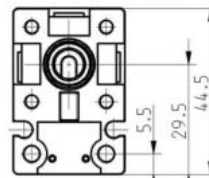
Operating and ambient conditions	
Operating medium	Filtered compressed air, lubricated or unlubricated, degree of filtering: 40 µm
Operating temperature range	0 to 50° C
Protection class	IP 40
Approval	c UL us recognised (OL); C-Tick



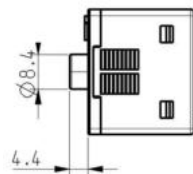
SPAB: Front view



SPAB with M8 plug connector



Adapter plate for pneumatic connection, version F



SPAB version for adapter plate

**Festo AG & Co. KG**

Ruiter Strasse 82  
73734 Esslingen  
www.festo.com  
Tel. +49 711 347 0  
Fax +49 711 347 21 44  
service\_international@festo.com