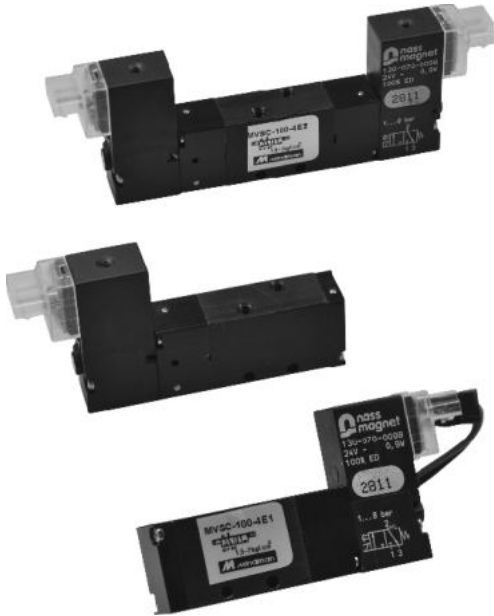


MVSC-100 series

SOLENOID VALVE



Specification:

Model	MVSC-100-4E1	MVSC-100-4E2
Bore No.	M3	
Port size	M3 × 0.5	
No. of port	5	
No. of position	2	
Medium	Air	
Operating pressure range	1.5~7 kgf/cm ²	
Proof pressure	10 kgf/cm ²	
Effective orifice	1.5 mm ²	
Response time	17 ms	
Ambient temperature	-5~+50°C (No freezing)	
Voltage	DC24V	
Power consumption	DC=0.9W (LED indicator)	
Available voltage range	±10%	
Insulation class	F class	
Weight	25 g	39 g

Order example:

MVSC - 100 - 4E2

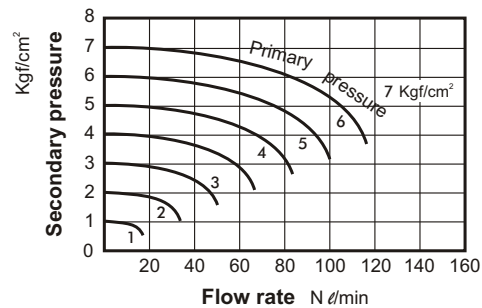
MODEL

BODY WIDTH

4: 4way

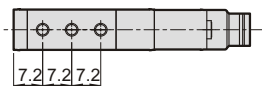
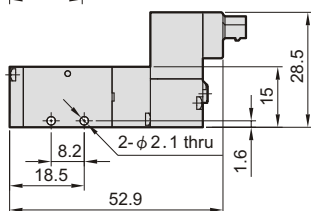
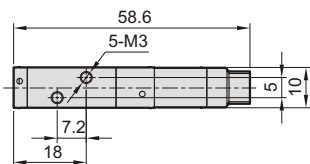
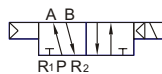
E1: Single solenoid
E2: Double solenoid

Flow features:



Dimensions:

MVSC-100-4E1



MVSC-100-4E2

