

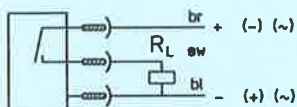
Proximity sensor

with yellow LED and protective circuit.
Without mounting kit
with integral cable:

Type SMEO-4-K-LED-24

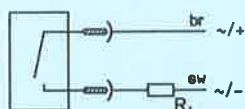
With plug:

Type SMEO-4-S-LED-24



With built-in cable:

Type SMEO-4-K-LED-220



Actuated by permanent magnet

Accessories:

Mounting kit Type SMBR... for the relevant cylinder type

Cable with socket for proximity sensors with plug:

Connector 90° lateral (WD) or straight (GD):

Order code

15678 SIM-K-WD-2.5 cable length 2.5 m

15679 SIM-K-GD-2.5

15239 SIM-K-WD-5 cable length 5 m

15240 SIM-K-GD-5

With cable



With plug



SMBR...



br. = brown
blk. = black
bl. = blue

These proximity sensors are used for contactless position indication with Festo cylinder series Type ESNU and DSNU.

The sensor emits an electrical signal when influenced by a magnetic field (e.g. permanent magnet on cylinder piston). The electrical connections are built in.

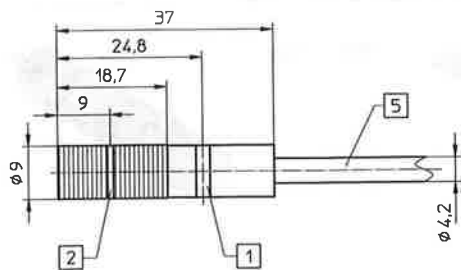
The switching status is indicated using via LED. When in the actuated state, the LED is lit. The switch is polarity-safe.

Assignment of cylinder and mounting kit

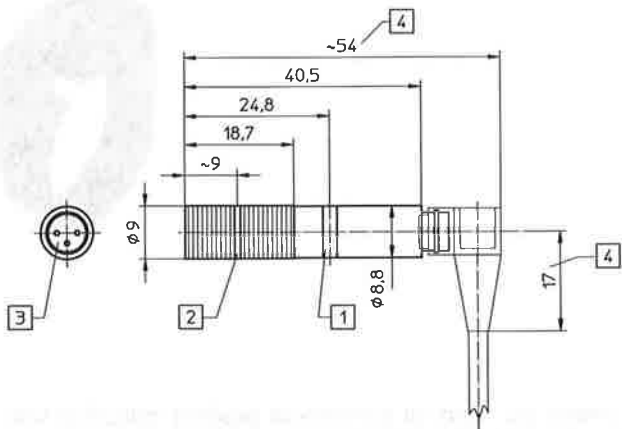
Order code	Type	For cylinder type	Piston dia. mm
19272	SMBR-8	ESNU, DSNU	8
19273	SMBR-10		10
19274	SMBR-12		12
19275	SMBR-16		16
19276	SMBR-20		20
19277	SMBR-25		25

Order code	Part No./Type	15 708 SMEO-4-K-LED-24	15 709 SMEO-4-K-LED-220	15 146 SMEO-4-S-LED-24
Medium		Magnetic field and electric current		
Design		Heat switch T60		
Mounting		With mounting kit Type SMBR... on cylinder		
Connection		3-core cable	2-core cable	Plug connector
Switching capacity		Max. 10 W		
Current on contact		Max. 500 mA		
Switching voltage		12 to 27 V DC/AC	12 to 250 V DC/AC	12 to 27 V DC/AC
Conductance		0.15 Ω max.		
Reproducible switching accuracy		±0.1 mm		
Switching frequency		Max. 2000 Hz		
Response time		2 ms		
Degree of protection		IP 67		
Temperature range		- 20 to +60 °C		
Materials		Housing, cover: polymer; cable: PVC		
Weight		0.075 kg		0.019 kg

Type SMEO-4-K-LED-24
SMEO-4-K-LED-220



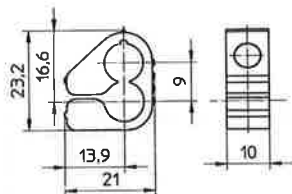
Type SMEO-4-S-LED-24



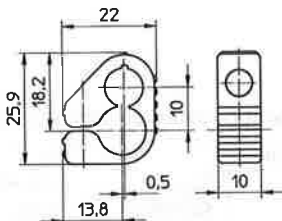
- 1 Yellow LED
- 2 Switching point
- 3 Suitable for socket Type SIM-K...
- 4 Mounting space for socket with 90° lateral connection
- 5 Type SMEO-4-K-LED-24
3-core cable (3 × 0.25 mm²) 2.5 m long
Type SMEO-4-K-LED-220
2-core cable (2 × 0.25 mm²) 2.5 m long

Mounting kits

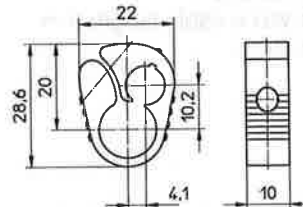
Type SMBR-8



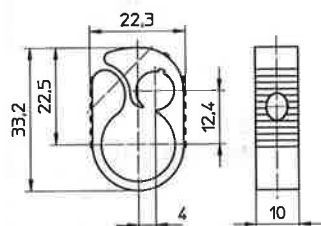
Type SMBR-10



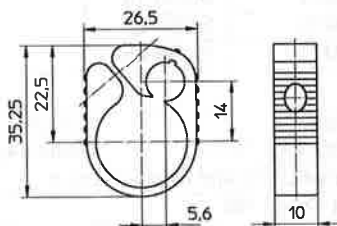
Type SMBR-12



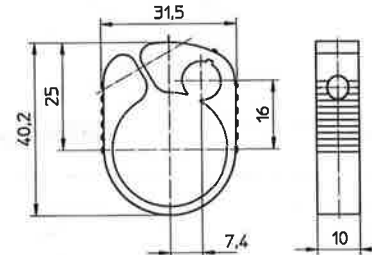
Type SMBR-16



Type SMBR-20



Type SMBR-25



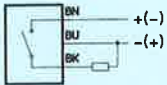
Proximity switch

with yellow light emitting diode and integral protective circuit.
Without mounting kit
with cast in cable:

Type SMEO-4U-K-LED-24

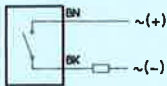
with plug socket:

Type SMEO-4Z-S-LED-24



with cast-in cable:

Type SMEO-4U-K-LED-220



Accessories:

See sheet 2.385 for plug-in units.

For an overview of Festo proximity sensors and mounting kits, see sheets 1.350, 1.351.

Type SMEO-4U-K-LED-24
SMEO-4U-K-LED-220



4

Type SMEO-4U-S-LED-24



These proximity switches are used for contactless position sensing of Festo cylinder series type ENSU and DSNU.

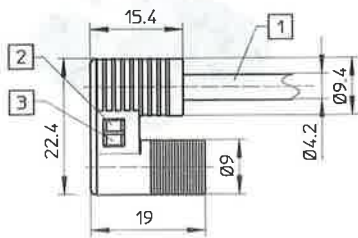
When a magnetic field approaches (e.g. the permanent magnet on the cylinder piston), the proximity switch emits an electrical signal. The electrical connections are also cast in.

The switching state is indicated by a light emitting diode. The yellow LED indicator lights up upon activation. The switch is protected against incorrect polarity.

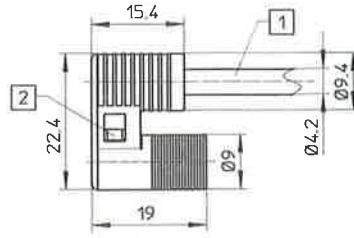
Colour code
BK = black
BN = brown
BU = blue

Order code	Part No./Type	36 198 SMEO-4U-K-LED-24	150 011 SMEO-4U-K-LED-220	36 199 SMEO-4U-S-LED-24
Medium		Magnetic field and electric current		
Design		Electrical signal generator for non-contacting position sensing via magnetic field		
Mounting		On cylinder with mounting kit type SMBR-...		
Connection		3-wire cable	2-wire cable	Plug connection
Switching capacity		max. 10 W		
Switching current		max. 500 mA		
Switching voltage		12 to 30 V <small>DC voltage AC voltage</small>	12 to 250 V <small>DC voltage AC voltage</small>	12 to 30 V <small>DC voltage AC voltage</small>
Volume resistance		0.15 Ω max.		
Reproducible switching accuracy		± 0.1 mm		
Switching frequency		max. 2 kHz.		
Degree of protection to DIN 40050		IP 67		
Temperature range		- 20 to + 60 °C		
Materials		Housing, cap: Polymer; cable: PVC		
Weight		0.070 kg	0.070 kg	0.010 kg

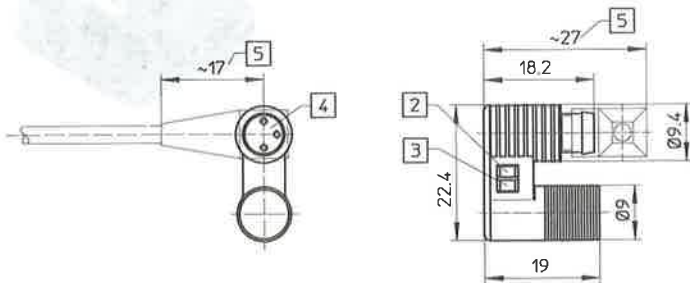
Type SMEO-4U-K-LED-24



Type SMEO-4U-K-LED-220



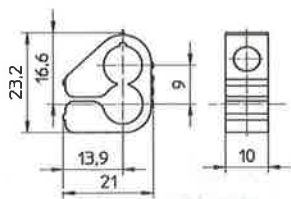
Type SMEO-4U-S-LED-24



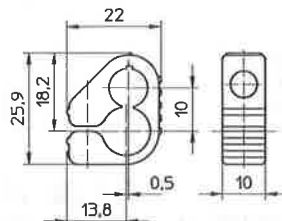
- 1 4-wire cable, 2.5 m long ($3 \times 0.25 \text{ mm}^2$)
2-wire cable, 2.5 m long ($2 \times 0.25 \text{ mm}^2$)
with type SMEO-4U-K-LED-220
- 2 Switching status yellow LED
- 3 Ready to operate green LED
- 4 Suitable for plug socket, type SIM-K...
- 5 Fitting space for 90° plug

Mounting kits

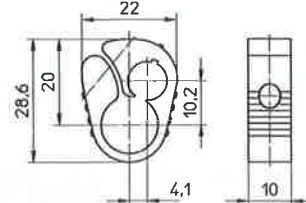
Type SMBR-8



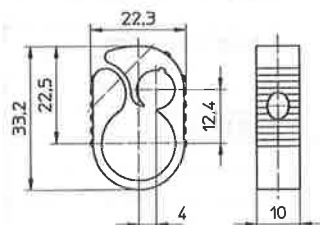
Type SMBR-10



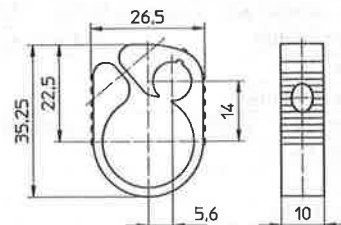
Type SMBR-12



Type SMBR-16



Type SMBR-20



Type SMBR-25

